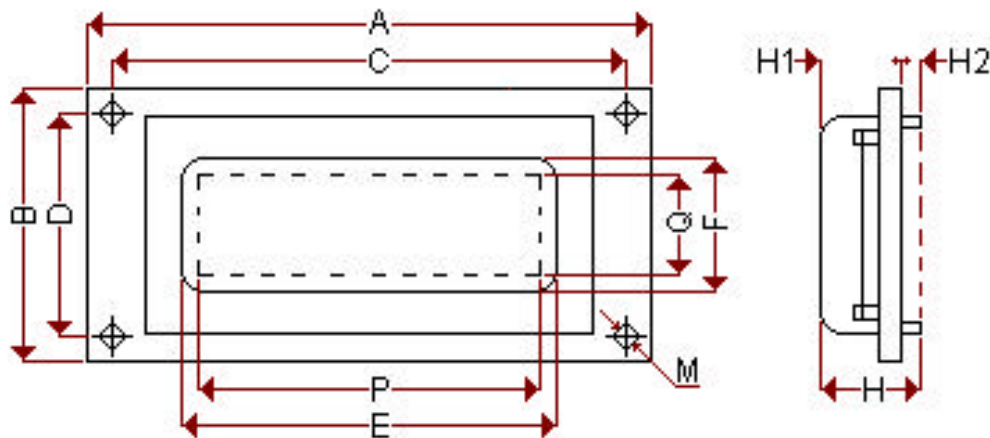


Dimensions



A x B	Module Size	_____ x _____	mm
E x F	Viewing Area	_____ x _____	mm
P x Q	Display Area	_____ x _____	mm
C	Length Between Mounting Holes	_____	mm
D	Length Between Mounting Holes	_____	mm
M	Diameter of Mounting Holes	_____	mm
H	Total Thickness	_____	mm
H1	Upper Thickness	_____	mm
H2	Lower Thickness	_____	mm

Display Content

- Character Type _____ characters _____ lines
- Character Font _____ x _____ dots + cursor
- Graphics Type _____ x _____ dots
- Dot Pitch _____ mm
 - Dot Size _____ x _____ mm
- Other (segment type, annunciators, etc.) _____

LCD

Viewing Angle: 6 o'clock 12 o'clock ___ o'clock

Type:

- TN
- STN: Yellow Light Gray Green
- FSTN (Black and White)
- Others _____
- Positive Type Negative Type
- Reflective Transflective Transmissive

Visual Specifications:

- Normal Anti-glare _____

Polarizer Color:

- Normal (neutral gray) _____

I/O Terminal

Specifying Allocation: Yes NoSpecifying Position: Yes No

IC

LCD Driver:

- Segment Driver _____
- Common Driver _____

Controller: _____ Built-in ExternalMPU: _____ Built-in External



Power Source

- Single Power Supply 5V _____ V
- 2 Power Supplies
 - For Logic: VDD – VSS = _____ V
 - For LCD Drive: VDD – VLC = _____ V

Connector

- Without With Model No. _____
- Built-in External

Current Consumption

For Logic: Typical _____ mA Maximum _____ mA
 For LCD Driver: Typical _____ mA Maximum _____ mA
 Others _____ Typical _____ mA Maximum _____ mA

Contrast Adjustment

Method: _____ Built-in External

Driving Method

Multiplexing 1/_____ duty 1/_____ bias
 Frame Frequency _____ Hz

Temperature Compensation Circuit

- Compensation Range 0°C to 50°C
- _____ °C to _____ °C

Backlight

- Without
- With
 - EL: Green White _____
 - LED: Yellow-Green Amber _____
 - FL: White _____
 - Backlight Type Edge Backlight Type
 - Brightness: _____ cd/m²
 - Inverter: Unnecessary Necessary
 - Brightness Adjustment: Unnecessary Necessary

Temperature Range

- Operating Temperature Range
 - 0°C to 50°C • _____ °C to _____ °C
- Storage Temperature Range
 - -20°C to 60°C • _____ °C to _____ °C

Application

Schedule

Estimate: _____
 Sample: Delivery Date: ____/____/____ Quantity: _____ pcs.
 Mass Production: Schedule: _____
 • Quantity per Month _____ pcs. • Total Quantity _____ pcs.

Customer Information

Name: _____
 Company Name: _____
 Telephone # () - Fax # () - Email Address: _____